

**ADVANCE REGISTRATION FORM - IRISH MINI REUNION CRUISE**  
**29TH SEPTEMBER- 2ND OCTOBER 2017 (FRIDAY- MONDAY)**  
**From Liverpool to Bristol - Marco Polo**

Telephone Booking Ref: (If Given)

Cabin Code:

Cabin Price Per Person: £

Prior to completing this Advance Registration Form please call the CONA Holiday Service team so they may check Cabin availability and hold a provisional reservation on your behalf. Call direct on: 0844 264 2122 / 01603 886742. In order to reserve your Cabin a non-refundable deposit of £100 per person is payable at the time of booking; (Cheques should be made payable to: 'Just For Groups!').

**A separate Advance Registration Form is required for each Cabin**

Lead Name: \_\_\_\_\_ Signed: \_\_\_\_\_ Date: \_\_\_\_\_

Your Address: (To whom all correspondence will be sent): \_\_\_\_\_

Post Code: \_\_\_\_\_

Telephone: \_\_\_\_\_ Email: \_\_\_\_\_

Passenger Details (As they appear on your passport) Please use **BLOCK CAPITALS**

Passenger One: Title: \_\_\_\_\_ First Name(s): \_\_\_\_\_ Surname: \_\_\_\_\_

Date of Birth: \_\_\_\_\_ Special Requests/Needs (Not guaranteed): \_\_\_\_\_

Passenger Two: Title: \_\_\_\_\_ First Name(s): \_\_\_\_\_ Surname: \_\_\_\_\_

Date of Birth: \_\_\_\_\_ Special Requests/Needs (Not guaranteed): \_\_\_\_\_

PLEASE COMPLETE: ANCILLARY OPTIONS		Passenger One Yes/No ?	Passenger Two Yes/No?	Notes:
REF				
AA	29th September Free Coach Transfer From: Bristol to Liverpool			This is for the Bristol to Bristol Option
AB	29th September Port Parking in Bristol £33 per vehicle			Only say Yes if you are the driver
AC	29th September Port Parking in Liverpool £33 per vehicle			Only say Yes if you are the driver
AD	2nd October Free Coach Transfer From: Bristol to Liverpool			This is for the Liverpool to Liverpool Option
AE	Drinks Inclusive 3 Night Package £45 per person*			*Only available if pre-booked by all cabin occupants
AF	Would you like details of our insurance cover from £49 per person?			Please see Insurance notes below.
AG	Do you require prices for pre/post cruise hotel accommodation?			

\*Regional Transfers: Subject to demand return transfers by coach - to Liverpool/return from Bristol - may be arranged from regional joining points (supplement applies). If you are interested in this optional service please state your nearest pick-up town/s here:

\*INSURANCE: Please note that it is a condition of booking a cruise that all passengers are adequately insured.

A 2% charge applies if you wish to pay by Credit Card.

**IMPORTANT:** A valid Passport is required for this cruise.

**BALANCE PAYMENTS:** Will be due no later than 90 days prior to departure.

A full cruise programme together with details for any pre and post cruise arrangements will be advised in due course. Once your Advance Registration has processed you will be sent a Holiday Confirmation Invoice together with an 'Ocean Cruise Passenger Information Form' which you must complete and return without delay. This form will request details in respect of Passports, Insurance Cover, Next of Kin, Medical Conditions plus Dining Time (18.30 or 20.30 sitting) and Table Number Seating preferences. All requests will be prioritised in order of booking and cannot be guaranteed. For our full Terms & Conditions please visit [www.theukholidaygroup.com](http://www.theukholidaygroup.com)

Please return this completed form (with your deposits of £100 per person if not already paid by credit card) to:-  
**The CONA Holiday Service, C/O, Just For Groups!, The Old Bakery, Queens Road, Norwich, NR1 3PL**

**Tel: 0844 264 2122 and 01603 886742 Email: [conatravelservices@justforgroups.co.uk](mailto:conatravelservices@justforgroups.co.uk)**

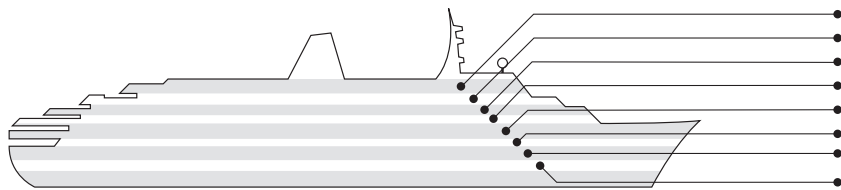


For Marco Polo Details please see reverse.



Conference of  
 Naval Associations  
**Holiday Service**





#### Decks

- Navigator
- Columbus
- Amundsen
- Magellan
- Pacific
- Atlantic
- Baltic
- Caribic

Cabin Code	Cabin Type	Per person	Availability	Deck
IG	Voyager Standard Inner Twin	£199	Limited	Baltic/Caribic
1	Standard Inner Twin	£219	Limited	Baltic/Caribic
2	Standard Plus Inner Twin	£239	Good	Atlantic/Baltic/Caribic
3	Superior Inner Twin	£269	Good	Amundsen/Pacific
4	Premium Inner Twin	£299	Good	Columbus/Amundsen/Pacific
5	Standard Single Inner	£449	Limited	Columbus/Caribic
OG	Voyager Standard Ocean View Twin	£299	Limited	Baltic/Caribic
6	Standard Twin Ocean View	£309	Good	Baltic/Caribic
7	Standard Twin Ocean View	£319	Good	Atlantic/Baltic/Caribic
8	Standard Twin Plus Ocean View	£329	Good	Atlantic/Baltic/Caribic
9	Superior Twin Ocean View	£359	Good	Columbus/Amundsen
10	Standard Single Ocean View	£589	Limited	Amundsen/Pacific
11	Superior Twin Plus Ocean View	£389	Good	Amundsen/Pacific
12	Premium Twin Ocean View	£419	Good	Nav*/Columbus/Amund/Pacific
DL	De Luxe Ocean View Twin	£509	Limited	Navigator/Pacific
JS	Junior Suite Twin	£599	Limited	Navigator/Pacific
DS	De Luxe Suite Twin	£679	Limited	Columbus

**A limited number of Twin Cabins are available for single occupancy at a supplement of 50% on the per person price. Please call for details.**

All Prices include a one way transfer by coach from Bristol to Liverpool on Friday 29th September 2017 or from Bristol to Liverpool on Monday 2nd October 2017.

**Notes:**  
Cruise & Maritime currently operate an automatic tipping system on Marco Polo with £5 per person per night added to the on-board account. / Full British Passports are required for all cruises / Optional shore excursions, personal expenditure such as drinks, laundry, communication and medical fees are not included. / Return Transport will be available from Cobh to Cork for a supplementary charge. / There will be a first and second sitting for dinner and the evening shows. / All passengers must be adequately insured. We can provide optional insurance from £49 per person. / Subject to demand return coach travel may be available, at a supplementary charge, from designated joining points. Details on application. / CONA have exclusive use of the Marco Polo subject to a minimum occupancy being met. In the event the cruise does not sell to capacity then Marco Polo reserve the right to promote the cruise to the general public.

## Marco Polo

The 22,080 tonne Marco Polo with her handsome traditional profile, beautiful teak decks and distinctive dark blue hull and deep draft is a fully stabilised and air-conditioned classic ocean liner.

### Accommodation

Accommodating up to 800 guests Marco Polo has eight passenger decks, serviced by four lifts. There is a good selection of comfortable cabin accommodation with 70% of cabins having an ocean view. Cabins range from standard, superior, premium and deluxe and category options are priced generally according to position, size and the facilities available. The more spacious higher graded DL, JS & DS accommodation have the added benefit of sitting areas, large panoramic ocean views, a bath tub and a fridge. Plus added value features ranging from complimentary bathrobes to a welcome bottle of Champagne.

### Dining & Entertainment

Marco Polo offers dining options at the impressive Waldorf Restaurant which has two sittings or as an alternative experience, the more informal and stylish Marco's Restaurant. There are five lounge areas comprising the theatre style Marco Polo main show lounge with big show entertainment & cabarets, the elegant Captain's Club, Scotts Bar - an ideal spot for the night owls - or the relaxing Palm Garden with wonderful ocean views.

### On board facilities include:

- Waldorf Restaurant • Marco's Bistro • Marco Polo Lounge • Scott's Bar • Palm Garden Lounge
- Columbus Lounge • Self-service tea & coffee from 6am to 10pm • Livingston Library • Nansen Card Room
- Internet Café • Shopping Arcade • Photo Gallery
- The Jade Wellness Centre with sauna, gym and massage facilities • Outdoor Pool • Medical Centre
- Sun Deck • Main Lobby • Reception • Tour Desks offering a wide range of shore tours • All cabins are well equipped with en-suite facilities, with shower, personal safes, telephone, television, hairdryer, music channels and electrical current is 110/220v AC.



## PLEASE CONTACT:

**By Phone: CONA Holiday Service on 0844 264 2122 By Email: conatravelservices@justforgroups.co.uk**

**By Post: The CONA Holiday Service, c/o Just For Groups!, The Old Bakery, Queens Road, Norwich, NR1 3PL**

Issue date: 20/01/2016

